

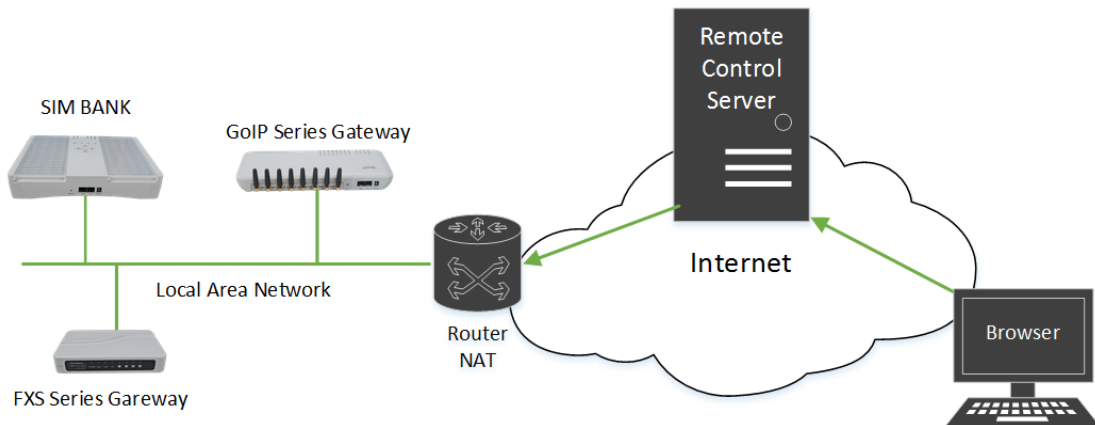
Remote Control Server

User Guide

1. Overview

Remote Control Server is utility software that is specially designed for remote web management of DBL' s GoIP and SIM bank products. This provides a mean for central management of products that are installed at different locations.

The diagram below demonstration a simple network topology. If you are in the same LAN where the various products are installed, you can access the device by typing its IP address (if known) in a browser. If you are at a different location, then it would be rather troublesome to setup VPN and find out the IP of various products.



Instead, all products can be configured to connect to the Remote Control Server with its own customized name. You can then logon to the Server and click on **"RADMIN"** beside the login name of the product that you like to access as shown in the diagram below.

[v1.07 Modify Options](#)

8301	24.84.220.30	<u>RADMIN Del</u>
CharleyHome8201	223.17.185.150	<u>RADMIN Del</u>
Fred-GOIP8	113.116.52.214	<u>RADMIN Del</u>
SIM32_Charley	223.17.185.150	<u>RADMIN Del</u>
ShenZhen-GOIP1	113.116.52.214	<u>RADMIN Del</u>

2. Installation

2.1 OS Requirement

Remote Control Server requires to run on Linux OS and it has been tested to be compatible with Linux OS from RedHat, CentOS, Debian, and Ubuntu.

For 64-bit system, the extended libs are required to be installed via the commands below.

- For RedHat/CentOS Linux, type the following command as root:

```
yum install -y glibc.i686
```

- For debian/Ubuntu Linux, type the following commands as root:

```
dpkg --add-architecture i386  
apt-get update  
apt-get install lib32z1-dev  
apt-get install libgssapi-krb5-2:i386
```

2.2 Installation & Startup

Execute the following commands as root to install the Remote Control Server.

```
wget http://dbltek.com/update/radmsrv_install.sh //Download installation script  
chmod 744 radmsrv_install.sh //Add attribute-executable  
./radmsrv_install.sh //Execute the installation script
```

After the installation is completed, execute the following command to start the Remote Control Server.

```
/root/radmsrv/run_radmsrv //Start or restart remote control service
```

To terminate the Remote Control Server, execute the following command.

```
killall radmsrv
```

The listening ports used by the Remote Control Server are:

```
TCP 8086, 1920, 38000~40000
```

Please make sure that those ports are opened in the firewall or disable the firewall (please consult your network administrator for any potential security issues.)

Should encounter any issues while installing the Remote Control Server, please feel free to contact technical support (www.dbltek.com/contactus.html) for help!

3. Configuration

3.1 Configuring Remote Control Server

To access the Remote Control Server web interface, enter the address “<http://<remote control server IP>:8086>” in a browser. In the login window, enter login username as “admin” and password as “admin” .

Be sure to change your login username and password for device security. Click on “Modify Options” to access the configuration window below.

Remote server's parameters

Web Port:	<input type="text" value="8086"/>
Web UserName:	<input type="text" value="admin"/>
Web Password:	<input type="text" value="admin"/>
Listen Port:	<input type="text" value="1920"/>
Server Key:	<input type="text"/>
Port Range:	<input type="text" value="38000-40000"/>
White List IP:	<input type="text"/>

- **Web Port** – This is the port number used for accessing the web interface. This is part of the address link “<http://<remote control server IP>:8086>” which should be modified accordingly if the Web Port is changed.
- **Web UserName** – This is the login user name to the Remote Control Server. As a security measure, please modify this upon the first time login.
- **Web Password** – This is the login password to the Remote Control Server. As a security measure, please modify this upon the first time login.
- **Listen Port** – This port is used for communicating with the devices connecting to the Remote Control Server.
- **Server Key** – This acts as an optional security password for the devices to login to the Remote Control Server.
- **Port Range** – This specifies the port range that can be used by the Remote Control Server for accessing the web server of the devices connected.
- **White List IP** (available in version V1.06) – This defines a list of IPs (separated by a comma) that are allowed to access the web server of the devices connected without

logging in to the Remote Control Server. This enables you to share a link to a device web with another public IP (enter this IP to the White List IP).

Note:

1. **Once both Web UserName and Web Password are changed, please click “Save Reboot” to restart the Remote Control Server in order for the change to take effect. The reboot will take about 30 seconds and then you will need to login to the Remote Control Server again.**
2. **Version V1.06 or newer has implemented a safety measure to limit the IPs that can access the device web via the Remote Control Server. With a successful login, the corresponding IP is valid for 24 hours for accessing a device web. The IPs listed in the “White List IP” are always allowed.**

3.2 Device Configuration (GoIP / SIM Bank)

The device configuration for connecting to Remote Control Server is the same for both GoIP and SIM Bank devices.

Access the device web page and then click on “Configurations” to access the “Preferences” page as shown below.

The screenshot shows the 'Preferences' page of a device web interface. The left sidebar contains navigation options: Status, Configurations, Preferences, Network, Basic VoIP, Advance VoIP, Media, Call Out, and Call Out Auth. The main content area is titled 'Preferences' and contains various settings. A red box highlights the 'Remote Control' checkbox, which is checked, and the 'Remote Server' field, which contains the IP address '202.104.186.90'. Other settings include Language (English), Time Zone (GMT+8), Time Server (pool.ntp.org), Auto-provision (Disable), Network Tones (China), DDNS (Disable), Auto Reboot (Enable), Reboot Time (04:00), Auto Reset CDR (Disable), IVR (Enable), Remote Server (Disable), and SMPP SMSC (Disable). A 'Web Access Security>>' link is visible at the bottom of the preferences section.

The default for “Remote Control” is disabled. Click on the square box to enable it and the corresponding parameters will then be displayed.

- **Remote Server** – Enter the IP address of the server where Remote Control software is running.
- **Remote Server Port** – Enter the Listen Port of Remote Control Server. It is 1920 by default.

- **Remote Server ID** – Assign a name for the device which will be displayed in the Remote Control Server.
- **Remote Server Key** – Enter the Server Key that is set in section 3.1. Leave this blank if the Server Key is not set.

3.3 Device Web Login via Remote Control Server

Once login to the Remote Control Server, you will see a list of devices that are logged in. Click on “RADMIN” beside the desired device will access it’ s web directly. The rest is just like what you normally access it’ s web via LAN except that the speed may be slower depending on the network condition.

[v1.07 Modify Options](#)

8301	24.84.220.30	RADMIN Del
CharleyHome8201	223.17.185.150	RADMIN Del
Fred-GOIP8	113.116.52.214	RADMIN Del
SIM32_Charley	223.17.185.150	RADMIN Del
ShenZhen-GOIP1	113.116.52.214	RADMIN Del